

Church Member Survey

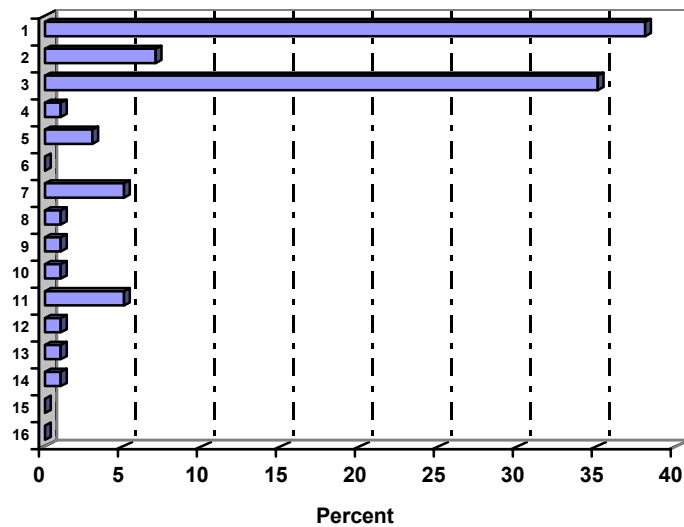
__number__ Total Respondents

TASKS OF THE CHURCH

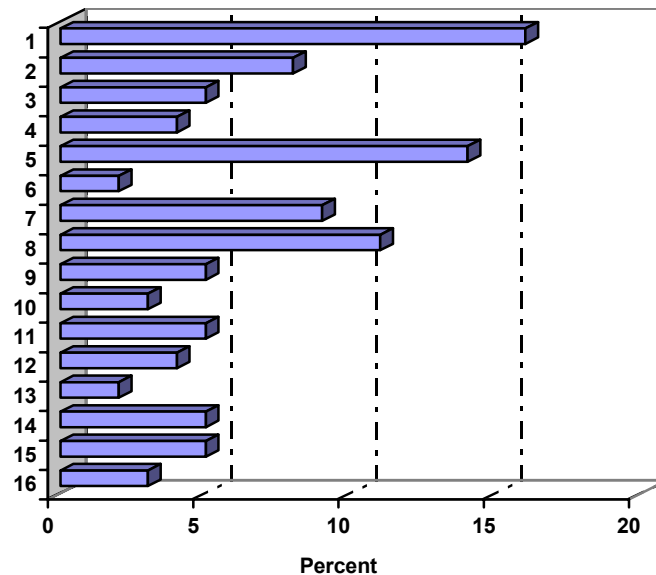
The survey listed a number of tasks that a local church is likely to perform. Congregational members were asked to evaluate these tasks as to whether they were very or generally satisfied with the congregation's current performance on the task, or whether they felt the task should receive more emphasis, or whether the task currently receives too much emphasis. The following percentages show how your congregation responded to these task questions. These percentages (read across) may not equal 100% due to rounding.

	<i>Needs More</i>	<i>Very Satisfied</i>	<i>Generally Satisfied</i>	<i>Too Much</i>
1. Offering worship that provides a meaningful experience of God and the Christian tradition.	13%	13%	87%	0%
2. Providing worship that expresses the Gospel in contemporary language and forms.	15	13	83	2
3. Providing Christian education for children and youth.	5	13	93	2
4. Providing Christian education programs for adults.	11	13	88	0
5. Helping members deepen their personal and spiritual relationship with God.	22	13	78	0
6. Sharing the good news of the Gospel with the unchurched.	18	13	80	2
7. Engaging in acts of charity and service to persons in need.	19	13	77	4
8. Encouraging members to act on the relationship of the Christian faith to social, political, and economic issues.	21	13	75	5
9. Providing a caring ministry for the sick, shut-ins and the bereaved.	17	13	83	1
10. Providing pastoral counseling to help members deal with personal problems.	19	13	81	1
11. Providing fellowship opportunities for members.	12	13	86	2
12. Helping members understand their use of time, talents, and money as expressions of Christian stewardship.	21	13	71	8
13. Supporting the global mission of the church/denomination.	15	13	76	10
14. Helping members discover their own gifts for ministry and service.	20	13	78	2
15. Participating in activities and programs with other local religious groups.	19	13	80	1
16. Expressing our denominational heritage/tradition.	19	13	78	3

Overall, which one of the above tasks does your congregation do best?



For the sake of your own personal involvement in your congregation, which one task would you most like to see strengthened?



Congregational respondents rates of agreement or disagreement with the following identity statements from the perspective of individual members looking at the congregation’s overall identity and vision.

	<i>Strongly Agree</i>	<i>Agree</i>	<i>Strongly Disagree</i>	<i>Disagree</i>
1. Our church’s identity, as it is, is one with which I feel comfortable.	40%	52%	8%	0%
2. It is easy for me to tell my friends what is unique about our church.	22	57	20	1
3. I have a clear understanding of what our church stands for.	20	62	18	0
4. An effective effort was made to instruct me in our church’s mission.	17	55	25	3
5. I have a strong sense of belonging to this congregation.	34	48	16	2
6. Being at this church has made a difference in my spiritual life.	34	50	15	2

ORGANIZATIONAL CHARACTERISTICS:

Members were asked to rate their agreement or disagreement with a series of statements related to certain organizational issues, such as making decisions, sharing information, and developing resources. The percentage (read across) may not equal 100% due to rounding.

	<i>Strongly Agree</i>	<i>Moderately Agree</i>	<i>Slightly Agree</i>	<i>Disagree</i>	<i>Don't Know</i>
1. Members are well informed about what the various committees and groups in the congregation are doing.	19%	53%	20%	7%	1%
2. The activities taking place in the congregation are well publicized to the surrounding community.	16	44	26	11	4
3. Study of the needs of the congregation and the community is regularly undertaken as the basis for church planning.	18	33	28	11	9
4. Members and groups get a lot of support and encouragement for trying something new in the congregation.	18	42	24	6	10
5. Members are encouraged to discover their particular gifts for ministry and service.	13	49	25	5	8
6. Lay leaders are provided the training they need for their committee and task assignments.	13	32	24	7	24
7. Every member who is capable and interested has an equal opportunity to hold key leadership positions.	45	37	6	7	5
8. The theological and biblical implications of important decisions are regularly discussed.	6	26	36	16	16
9. Important decisions about the life of the church are rarely made without open discussion by church leaders <i>and</i> members.	36	40	11	7	6
10. Disagreements and conflicts are dealt with openly rather than hushed up or hidden behind closed doors.	18	33	21	11	18
11. It is easy to summarize for visitors and non-members how our congregation differs from other congregations in the area.	13	34	27	14	11
12. Members help each other out in times of trouble.	48	36	8	3	5
13. Cooperative programs with churches of other denominations are highly valued in our church.	16	32	33	8	11
14. The current morale of our church members is high.	31	46	11	4	8
15. There is a sense of excitement among members about our congregation's future.	24	45	19	5	8

CONGREGATIONAL IDENTITY:

Listed below are several alternatives that touch upon important dimensions of a church's identity. Using the seven point scale between each set of alternatives, members were asked to circle the number that best describes where the congregation falls, "1" meaning most like the characteristic on the left, "7" meaning most like the characteristic on the right, "4" meaning an equal mix of both. The number below indicates the average of all these responses.

1. Our church is more influenced by history and tradition	1-----3.7-----7	Our church is more influenced by contemporary ideas and trends
2. Members are similar to the people who live immediately around the church	1-----2.6-----7	Members are very different from people who live immediately around the church.
3. Our church is very involved with the community around the church	1-----2.8-----7	Our church is not at all involved with the community around the church
4. Our church is primarily oriented to serving our members	1-----3.5-----7	Our church is primarily oriented to serving the world beyond our membership
5. Our congregation feels like one large family	1-----3.7-----7	Our congregation feels like a loosely knit association of individuals and groups
6. Our church is known as a prestigious one in the area.	1-----2.4-----7	Our church is not considered one of the status churches in the area.
7. Our church's approach to social issues is basically educational	1-----2.9-----7	Our church's approach to social is decidedly "activist."
8. The congregation's approach to individual salvation emphasizes education, nurture and gradual growth in the faith	1-----2.0-----7	The congregation's approach to individual salvation stresses conversion and a born-again experience
9. Our church gives strong expression to its denominational identity and heritage	1-----3.0-----7	It would be difficult for a visitor to know to which denomination the congregation belongs.
10. Our congregation strives to create partnerships with other local churches.	1-----3.4-----7	Our congregation prefers to work by ourselves or through our Denominational channels

TASKS OF THE PASTOR:

Members were asked to rate how high or low a priority should each of the following tasks be for the (Senior) Pastor of the church. The following percentages show how your congregation responded to these task questions. The percentages (read across) may not equal 100% due to rounding.

	<i>Very High</i>	<i>High</i>	<i>Moderate</i>	<i>Low</i>
1. Providing administrative leadership for the congregation's ministry.	30%	40%	28%	2%
2. Actively and visibly supporting the church's stewardship program.	18	39	39	4
3. Directly involving laity in planning and leadership of church programs and events.	26	50	22	3
4. Planning and leading a program of new member recruitment.	8	28	50	14
5. Participating in local community activities, issues and problems.	11	28	49	11
6. Holding social justice issues before members.	6	28	39	26
7. Planning and leading worship sensitive to the needs of the congregation.	71	26	3	0
8. Emphasizing the spiritual development of members.	39	42	19	0
9. Visiting the sick, shut-ins, and bereaved.	33	46	21	1
10. Visiting members at their homes.	6	20	41	33
11. Pastoral counseling of members having personal, family, and/or work related problems.	37	44	17	2
12. Developing and supporting religious education program for children and youth.	23	40	31	7
13. Developing and leading adult education programs.	12	41	41	6
14. Supporting the world mission of the church.	11	36	41	12
15. Participating in denominational activities beyond the local church, that is, at the regional or national level.	4	19	55	21
16. Preparing and preaching inspiring sermons.	77	19	4	0

SIZE AND CONDITION OF FACILITIES:

A. Congregational members were asked to assess the following spaces in terms of *size*.

	<i>Excellent</i>	<i>Adequate</i>	<i>Needs Attention But Not Immediate</i>	<i>Needs Immediate Attention</i>
Worship Space	35%	45%	18%	3%
Educational Space	37	50	11	2
Fellowship Space	35	57	8	0
Office Space	48	46	6	0
Parking	4	31	43	22

B. Congregational members were asked to assess the following spaces in terms of *general condition and aesthetic appeal*.

	<i>Excellent</i>	<i>Adequate</i>	<i>Needs Attention But Not Immediate</i>	<i>Needs Immediate Attention</i>
Worship Space	41%	43%	13%	2%
Educational Space	38	52	8	2
Fellowship Space	26	55	17	2
Office Space	56	38	6	1
Parking	8	40	32	20
Exterior & Grounds	21	53	23	4

CHRISTIAN EDUCATION FOR CHILDREN

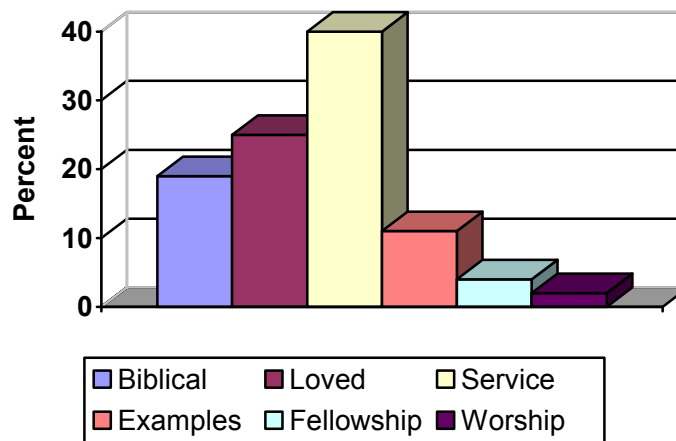
A. Members were asked how satisfied they were with each of the following aspects of the Christian Education program for children?

	<i>Very Satisfied</i>	<i>Generally Satisfied</i>	<i>Somewhat Satisfied</i>	<i>Not Very Satisfied</i>	<i>DK</i>
1. The total number of children that attend.	55%	28%	4%	0%	12%
2. The time and day at which classes for children are held	55	30	2	0	12
3. The training provided teachers	20	33	13	2	32

B. Members were asked how they would rate each of the following aspects of the congregation's church school program for children?

	<i>Need More Or better</i>	<i>Generally Satisfied</i>	<i>Too Much Already</i>	<i>Doesn't Have No Need</i>
1. Teaching children about the Bible and the church	14%	82%	1%	3%
2. Giving children the feeling that they are loved by God and the church	8	90	1	2
3. Developing in children a sense that Christian love includes respect for and service to others	13	85	0	1
4. Providing examples of what it means to be a Christian in today's world	18	80	0	2
5. Offering enjoyable fellowship activities	13	84	2	2
6. Including the children in the worship service	12	81	4	3

C. Members were asked to rate which of the above 6 types of activities for children they believe should be the primary focus of the congregation's children's program?



ADULT EDUCATION AND SMALL GROUP PROGRAMMING

For each of the kinds of programs or groups listed below, members were asked to indicate:

- A:** Whether they think their congregation needs more or better programs of this kind; is doing about right; is already over-emphasizing or doing too much in the area; or, if the congregation currently **doesn't have** such a program and they see no need for beginning it?
- B:** Whether it is likely that they would **attend** if the congregation offered more or better programs of this kind.

	<i>Need More or Better</i>	<i>About Right</i>	<i>Too much Already</i>	<i>Doesn't Have No Need</i>	<i>Attend</i>
1. Study groups dealing with the Bible and theology	13%	84%	0%	3%	15%
2. Study and discussion groups dealing with contemporary issues, topics and problems	32	62	1	5	13
3. Prayer, meditation and spirituality groups	9	87	2	3	8
4. Support groups in which members share with each other at the level of feelings and personal experience	28	59	2	12	3
5. Fellowship events or hobby groups	28	69	0	4	14
6. Evangelistic outreach and visitation groups	10	56	2	32	1
7. Social concern groups for planning and working on projects directed at community or social issues/problems	25	65	3	7	8
8. Recreation/athletic activities	31	38	1	30	9
9. Literary/culture groups	21	53	2	25	8
10. Groups and classes that explore marriage, family, and parenting issues	47	37	1	15	9

Members rated these as the <i>best times</i> to attend adult programs?		Members rated these as the <i>worst times</i> to attend adult programs?	
Weekday evening	42%	Weekday morning	36%
Sunday morning	33	Saturday morning	32
Sunday evening	31	Weekday afternoon	31
Weekday morning	20	Weekend retreat	29
Weekday afternoon	16	Sunday evening	16
Saturday morning	13	Sunday morning	11
Weekend retreat	11	Weekday evening	9

WORSHIP

A. Members were asked how satisfied are were with each of the following aspects of the congregation's Sunday worship?

	<i>Need More Emphasis</i>	<i>Very Satisfied</i>	<i>Generally Satisfied</i>	<i>Receives too Much Attention</i>
1. Providing time for members to greet one another	3%	62%	31%	4%
2. Providing worship that is emotionally moving	23	33	43	0
3. Providing worship that is intellectually challenging	27	30	42	1
4. Attention given to sacraments	7	51	39	3
5. Lay participation in leading worship	6	48	39	7
6. Use of inclusive, non-sexist language	4	45	32	19
7. Use of creeds or statements of faith	7	46	44	4
8. Silent prayer/meditation	16	46	36	1
9. Having parts of the worship especially for children	5	69	22	4
10. Use of new or unfamiliar hymns	5	25	39	30
11. Corporate prayer in which the entire church participates	4	42	43	12
12. Providing worship at times other than Sunday morning	25	22	49	4
13. Use of contemporary worship styles, music and language	17	32	41	10

QUALITIES OF A GOOD SERMON

Members were asked, personally, how important for them were the following in the mix of qualities that make a good sermon?

	<i>Essential</i>	<i>Important</i>	<i>Not Very Important</i>	<i>Downright Distracting</i>
1. Sets forth a clear faith position as a guide for making decisions and living a faithful life.	41%	46%	12%	0%
2. Expresses a clear, unambiguous religious authority.	12	44	35	9
3. Touches directly on my everyday life.	49	46	5	0
4. Contains scholarly or literary illustrations.	14	43	41	2
5. Is Biblically based and illustrated.	19	49	30	2
6. Makes me reflect on issues and events that go beyond my personal life and local community.	49	46	5	1
7. Is challenging and thought-provoking.	60	39	2	0
8. Obviously flows from the depth of the preacher's own personal faith and spiritual convictions.	31	56	13	0
9. Is comforting and reassuring.	19	51	30	0
10. Is carefully composed and skillfully delivered.	39	53	7	1
11. Is spiritually moving and inspirational.	47	46	8	0
12. Sets forth various sides of an issue without advocating one position as the only Christian position.	23	52	20	5

STEWARDSHIP DEVELOPMENT

- A. Members were asked what **priority** they would give to each of the following efforts to encourage the congregation's stewardship program?

	<i>Highest</i>	<i>High</i>	<i>Moderate</i>	<i>Low</i>	<i>None</i>
1. Strong appeals from the pulpit by lay people	7%	35%	39%	15%	4%
2. Adult education programs on the meaning of Christian stewardship	6	37	41	13	3
3. Mailings to members clearly setting out the reasons for Christian stewardship	16	44	30	8	3
4. Encourage membership pledging	34	37	23	5	1
5. Every member canvassed or visitation	13	24	34	22	8
6. Tithing or proportionate giving	6	22	35	30	7
7. Hiring a professional fund raising consultant or group	1	3	9	43	44
8. Giving money to ecumenical or non-denominational programs	11	41	39	7	2
9. Encourage giving to a church endowment through wills and bequests	10	37	40	12	2
10. Special giving appeals for a charitable cause or mission effort	12	34	41	11	2

- B. Members were asked to imagine that the congregation was able to raise significantly more money than currently budgeted and rate how high a **priority** they would put on each of the following uses of that money?

	<i>Highest</i>	<i>High</i>	<i>Moderate</i>	<i>Low</i>	<i>None</i>
1. Increased support to our denomination	5%	24%	44%	25%	2%
2. Increased support for community social service programs	22	40	29	9	0
3. Increased support for world missions	17	27	34	18	4
4. Increase current staff salaries	11	33	40	13	3
5. Hire additional staff	14	19	36	24	8
6. Renovate, enlarge or add to current facilities	10	24	26	31	10
7. Increase budget for educational and program materials and resources	12	29	45	12	1
8. Begin an endowment or add to an existing one	12	27	36	20	5
9. Increase evangelistic efforts and advertising	1	3	20	55	22

EVANGELISM

A. In thinking about the many possible ways that the church could use to share the Word and to recruit new members for the church, members were asked to rate the priority of each of the following efforts.

	<i>Highest Priority</i>	<i>High Priority</i>	<i>Moderate Priority</i>	<i>Low Priority</i>	<i>No Priority</i>
1. Stressing from the pulpit the importance of members inviting others to visit your church	6%	18%	39%	27%	10%
2. Appeals for members to make a personal witness about their faith to others	3	7	28	40	22
3. The use of newspaper advertisements	0	6	19	39	36
4. The use of radio or television	0	4	7	40	49
5. Mailing church literature to newcomers in your community	5	34	37	14	10
6. Pastoral or lay visits to newcomers in your community	6	27	29	23	15
7. Using a group of lay volunteers to canvass (knock on doors in) the neighborhood	1	2	10	32	55
8. Use of a church web site	13	38	31	14	5
9. Developing church programs especially targeted at unchurched persons in your community	3	14	43	24	17
10. Changing the style of your worship to make it more appealing to the unchurched	3	4	19	38	36
11. Developing home Bible, prayer and study groups to which friends who are not members are invited	3	9	37	33	19

12. Overall, to what extent did members think the congregation needs to increase or improve its efforts at sharing the Word?

[2%] To a great extent
[28%] To some extent

[67%] We are doing fine as is
[3%] We're doing too much now

13. To what extent would individual members personally be willing to get more involved in the spiritual outreach efforts of the congregation?

[2%] To a great extent
[6%] To a moderate extent

[36%] To some extent
[56%] Not at all

14a. **Then:** In thinking about what originally brought you to this congregation, What originally attracted you to attend this congregation? Will not equal 100% since it was possible to pick more than one.

- | | |
|-----------------------------|-----------------------------|
| 38% The minister | 11% My friends are here |
| 28% The music program | 5% The social outreach |
| 25% The church's reputation | 44% The worship style |
| 3% Adult Education program | 0% The self-help groups |
| 40% Child & Youth program | 27% The denominational ties |

14b. **Now:** In thinking about what originally brought you to this congregation, What is the foremost reason you remain a part of this congregation? Will not equal 100% since it was possible to pick more than one.

- | | |
|-----------------------------|-----------------------------|
| 38% The minister | 11% My friends are here |
| 28% The music program | 5% The social outreach |
| 25% The church's reputation | 44% The worship style |
| 3% Adult Education program | 0% The self-help groups |
| 40% Child & Youth program | 27% The denominational ties |

RELIGIOUS BELIEFS & PERSONAL PRACTICES:

Members were asked which one of the following best expresses their view of the Bible?

Percent

- | | |
|----|--|
| 2 | (1) The Bible is an ancient book of history, legends and cultural stories recorded by man. It has little value today except as classic literature. |
| 11 | (2) The Bible is a valuable book because it was written by wise and good people, but I do not believe it is really God's Word, but it can teach us many moral precepts. |
| 57 | (3) The Bible is the record of many different people's response to God and because of this, people and churches today must interpret for themselves the Bible's basic moral and religious teachings. |
| 30 | (4) The Bible is the inspired Word of God and its basic moral and religious teachings are clear and true, even if it reflects some human error. |
| 1 | (5) The Bible is the actual Word of God and is to be taken literally. |

Members were asked to rate their agreement or disagreement with the following belief statements.

	<i>Strongly Agree</i>	<i>Agree</i>	<i>Neutral or Unsure</i>	<i>Disagree</i>	<i>Strongly Disagree</i>
1. There is no other way to salvation but through belief in Jesus Christ.	11%	18%	23%	29%	18%
2. Human beings have developed over millions of years from less advanced forms of life.	40	33	16	5	6
3. Jesus' resurrection from the dead was an actual event.	22	29	28	8	4
4. All religions are equally good ways of helping a person find ultimate truth.	17	33	21	21	8
5. The Bible has answers for all of the basic questions of life.	12	33	33	18	5
6. Social justice is at the heart of the Gospel.	17	36	35	11	2
7. It is often difficult to live out my faith in daily work, leisure and community life.	8	38	17	29	9

Members were asked to indicate how often they engage in the following practices.

	<i>Daily</i>	<i>Few times a week</i>	<i>Once a week</i>	<i>Few times a month</i>	<i>Seldom or Never</i>
1. Spend time in private devotional activity such as prayer, meditation, reading the Bible or other spiritual books?	21%	28%	10%	15%	26%
2. Use the web at home or at the office?	59	16	6	4	15
3. Use email?	63	16	4	4	14
4. Look at religious Internet sites?	2	1	2	8	88
5. Volunteer time in social service?	5	18	16	36	26

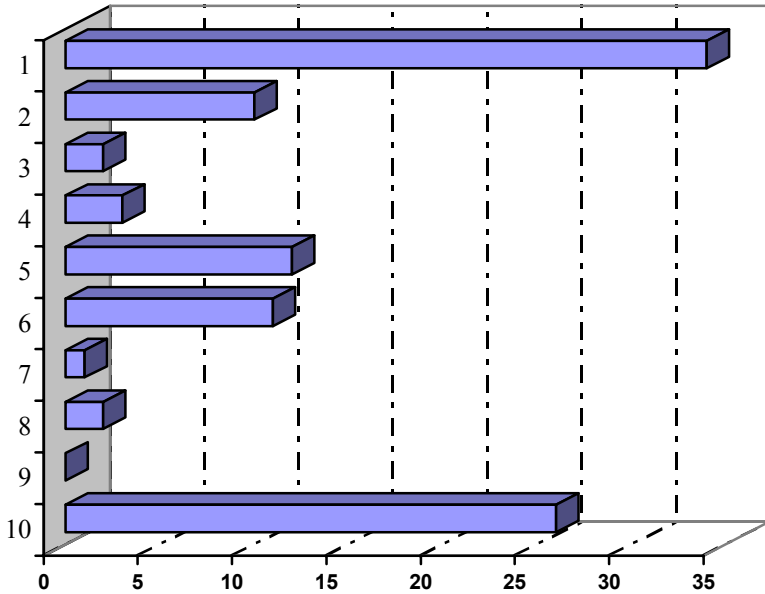
******ONLY FOR PASTORAL SEARCH INVENTORY******

THE CHOICE IS YOURS

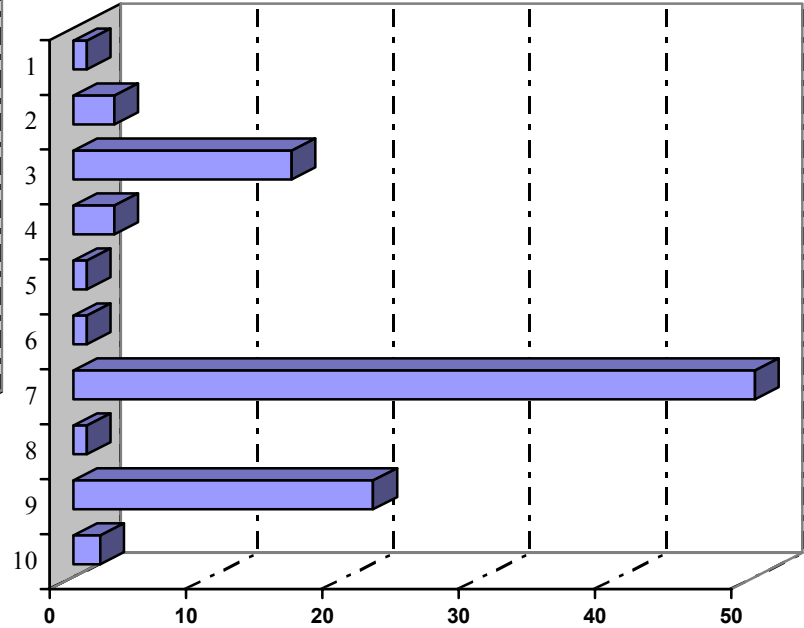
Members were asked to what extent they would like to see the following roles embodied in the pastor of the congregation, and then to indicate what were the most important and least important roles?

	<i>Essential</i>	<i>Very Much</i>	<i>Moderate</i>	<i>Not Very</i>	<i>None at all</i>
1. Minister of the Word/Teacher of the Congregation	32%	36%	28%	3%	0%
2. Church Administrator	13	39	36	11	1
3. Social Activist	5	23	46	21	4
4. Group Facilitator	7	34	49	9	1
5. Celebrant/Worship Leader	23	36	31	9	0
6. Spiritual Guide	22	41	32	6	0
7. Witness/Evangelist	2	6	31	43	18
8. Counselor/Healer	15	35	42	7	0
9. Community Chaplain	3	20	43	31	3
10. Friend/Fellow Traveler	45	38	15	2	0

Most Important Role:



Least Important Role:



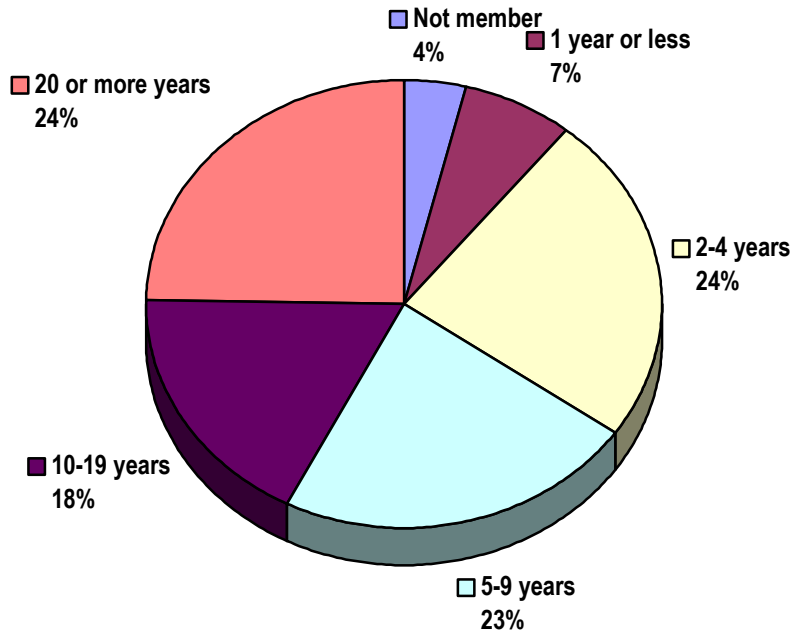
STYLE OF MINISTRY

Members were asked which characteristics of good pastors they preferred from each of these pairs

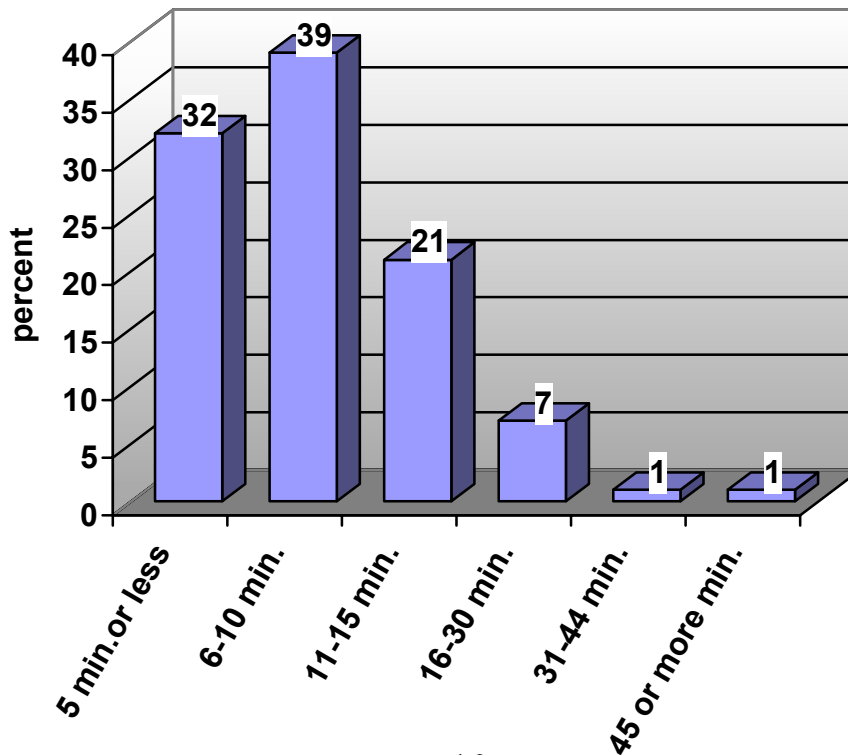
	<i>Strongly Prefer</i>	<i>Slightly Prefer</i>	<i>Slightly Prefer</i>	<i>Strongly Prefer</i>	
1. Expertise in Biblical and theological matters	17%	15%	32%	36%	Emphasis on spiritual development
2. Thought-provoking and challenging	36	31	20	13	Comforting and reassuring
3. Emphasizes the Bible	13	34	30	23	Emphasizes contemporary Issues
4. New approaches and ideas	57	36	6	1	Does things as they have always been done
5. Strong and decisive decision-maker	10	29	46	16	Encourages lay decision-making
6. Relaxed interpersonal style	62	32	5	1	Formal interpersonal style
7. Achieves set goals, regardless of cost	31	41	24	5	Costs of goals sets priorities
8. Helps people figure out for themselves	47	42	10	1	Advises people what to do
9. Reflective and reserved	8	19	49	25	Outgoing and socially engaging
10. Maintains a private life	37	47	14	2	Gives whole self to church

CHURCH PARTICIPATION

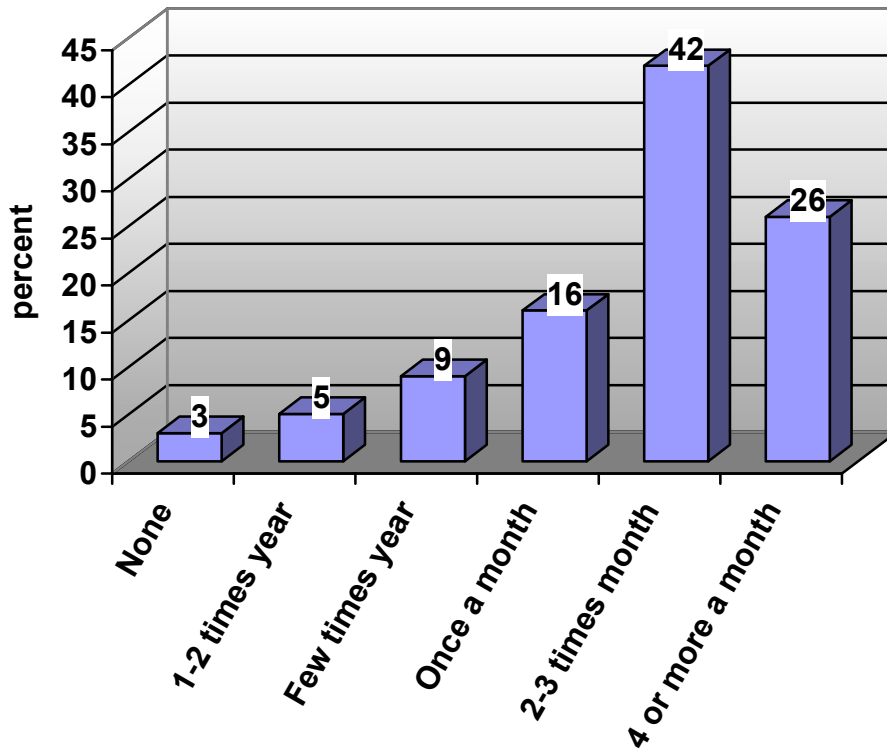
How long have you been a member?



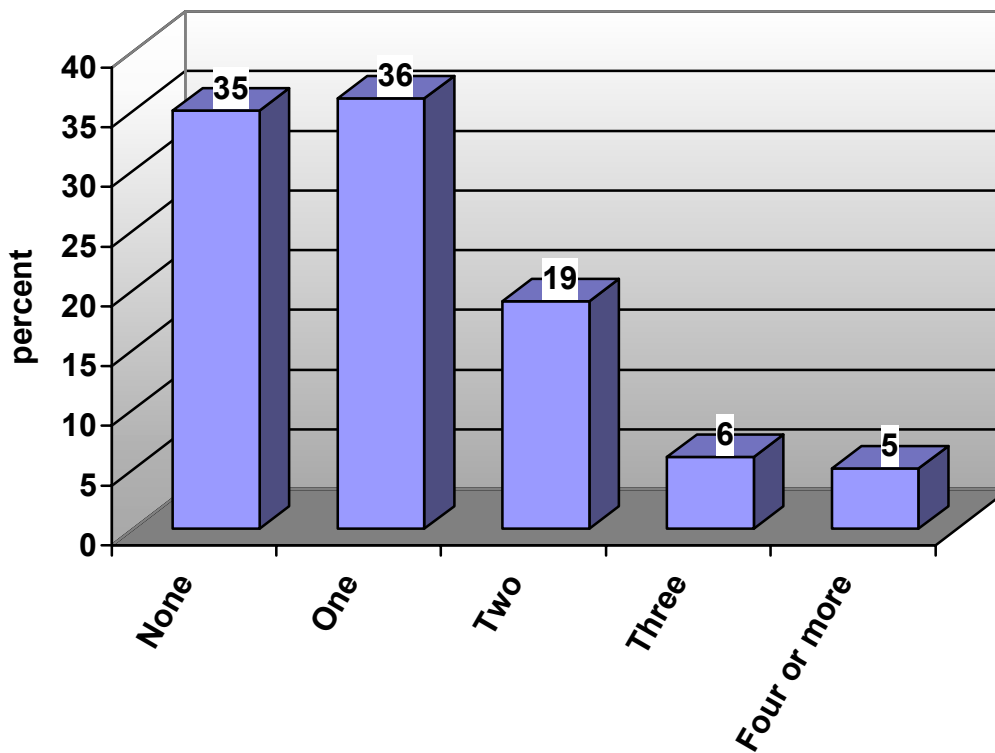
How long does it usually take you to travel from home to church?



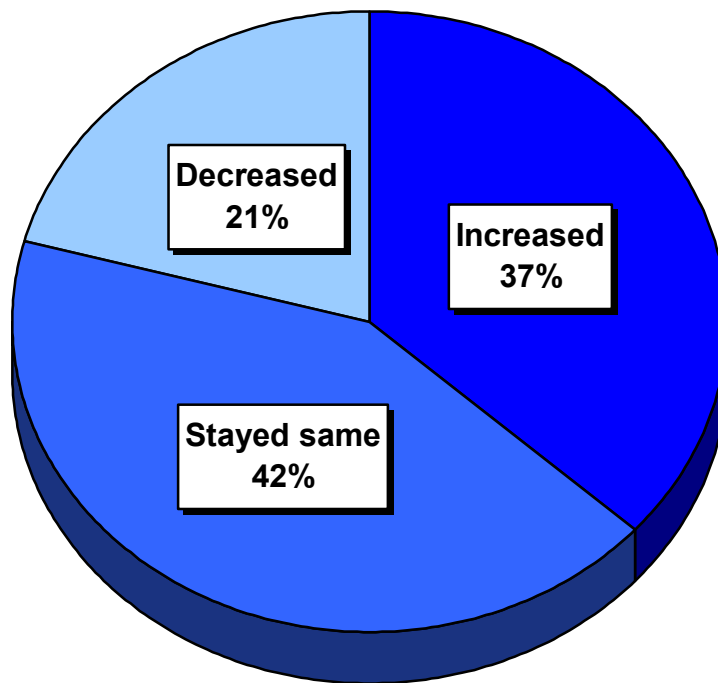
On average, how many times have you attended church services during the past year?



In how many church committees and groups do you hold membership?



Has your involvement in the congregation increased, decreased, or remained about the same in the last few years?



If a member's participation has increased or decreased, which of the following are the reasons for the change. [Percentages will not equal 100% because it was possible to select more than one answer or none at all.]

If involvement has increased (n=93), then what are the reasons:

More time available	34 persons
Better health	4
Stronger faith	23
More positive attitude	25
Because of children	22
Accepted office/responsibility	61

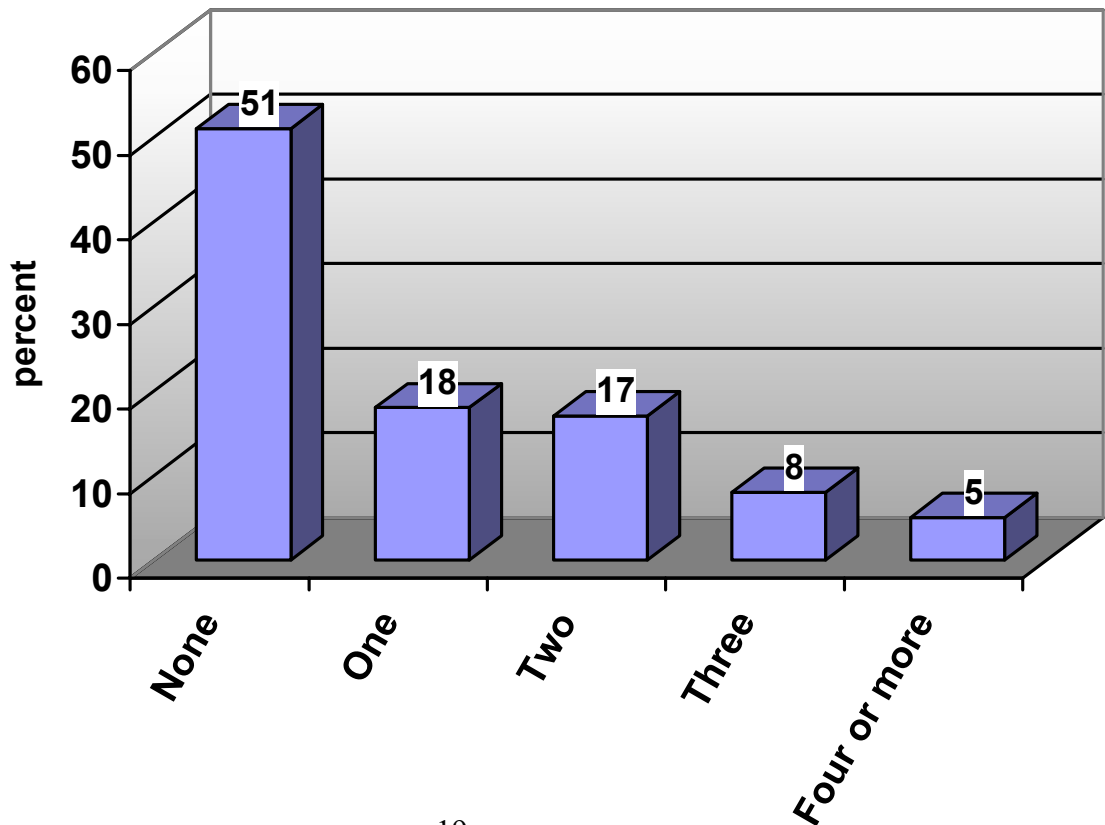
If involvement has decreased (n=53), then what are the reasons:

Decreased faith	3 people
Less time available	37
Health problems	10
Given up office/responsibility	11
More negative attitude	15
Because of children	8

Approximately how much did your family household contribute to the church per year?

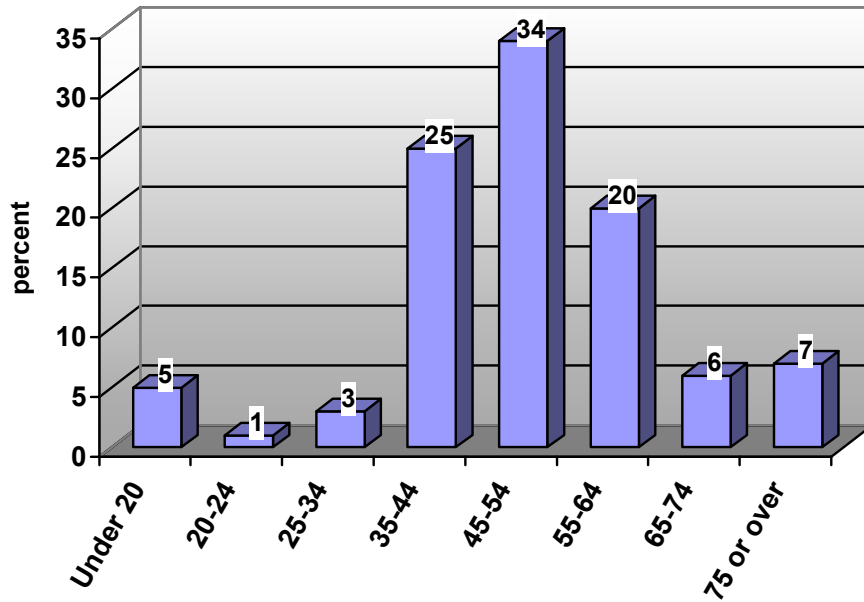
Contribution Category	Percent of Respondents
Under \$200	5%
\$200 - 599	12%
\$600 – 999	12%
\$1,000 – 1,499	19%
\$1,500 – 2,499	21%
\$2,500 – 3,499	14%
\$3,500 – 4,999	9%
\$5,000 – 7,499	8%
\$7,500 or more	1%

How many persons or families have you invited to visit or join the church in the past year?



CONGREGATIONAL BACKGROUND INFORMATION

Age Grouping



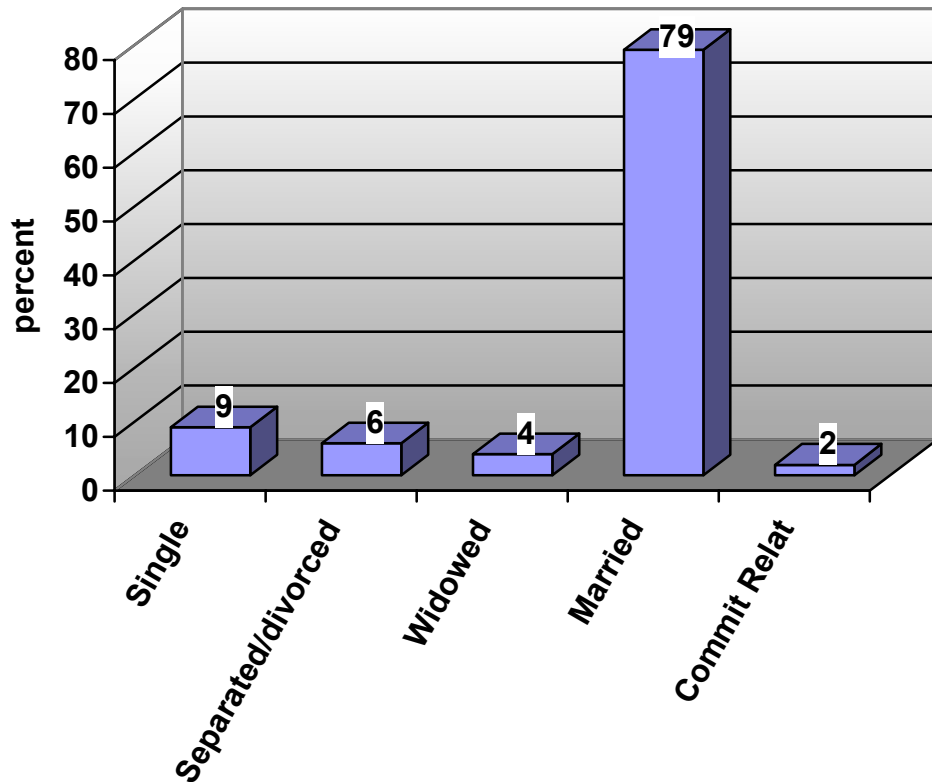
Gender

Male -- 39%
Female -- 61%

Ethnic Background

White – 99.6 %
Other – 0.4 %

Marital Status



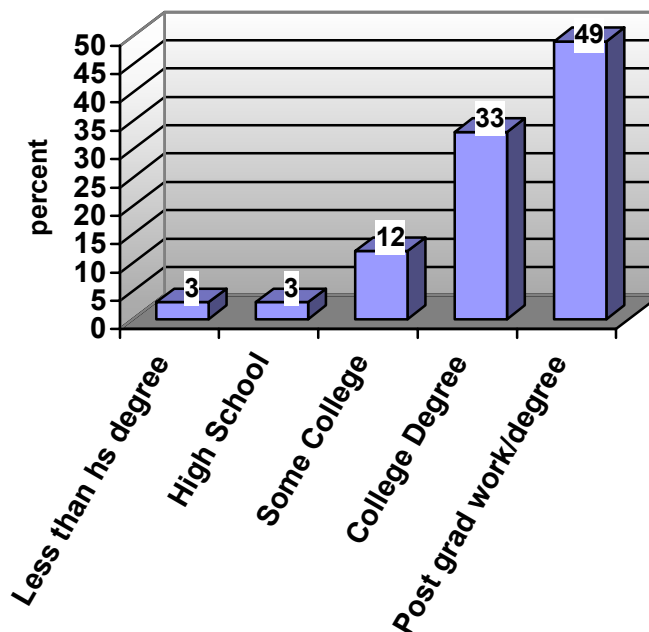
Of those who have children, number of children in each age range:

	# of Children
Birth - 5 years old	83
Six - 12 years old	78
Thirteen - 18 years old	79
Nineteen and over at home	43

Which best describes your current household?

	Percent
One person living alone	7
A couple without children	29
One adult with child/children	6
Two or more adults with child/children	53
Several adults living in same household	5

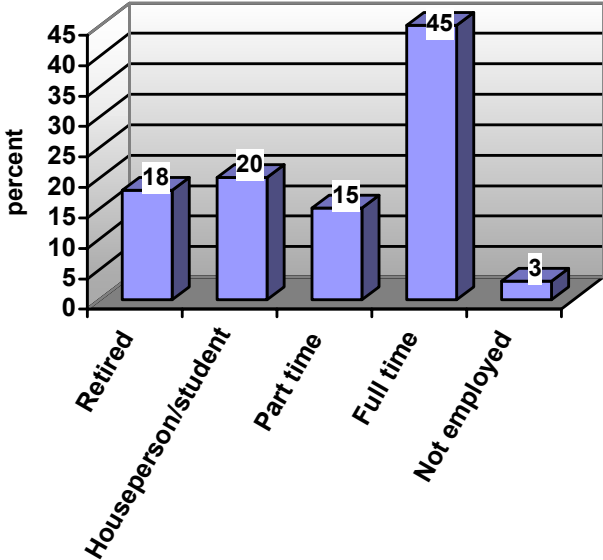
Level of Education



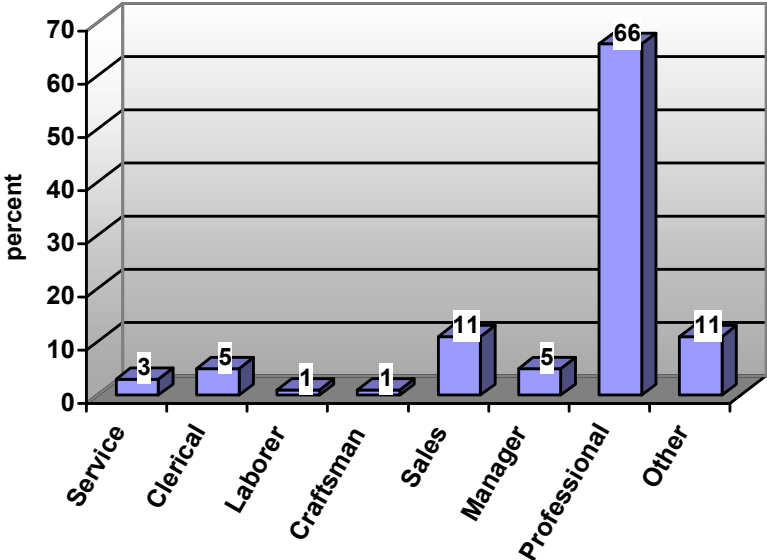
Household Income Range

Under \$25,000	6%
\$25,000 - \$49,999	8%
\$50,000 - \$74,999	15%
\$75,000 - \$99,999	17%
\$100,000 - \$149,999	34%
\$150,000 or more	20%

Employment Status



Occupational Categories



Are you self-employed? 12 percent said yes

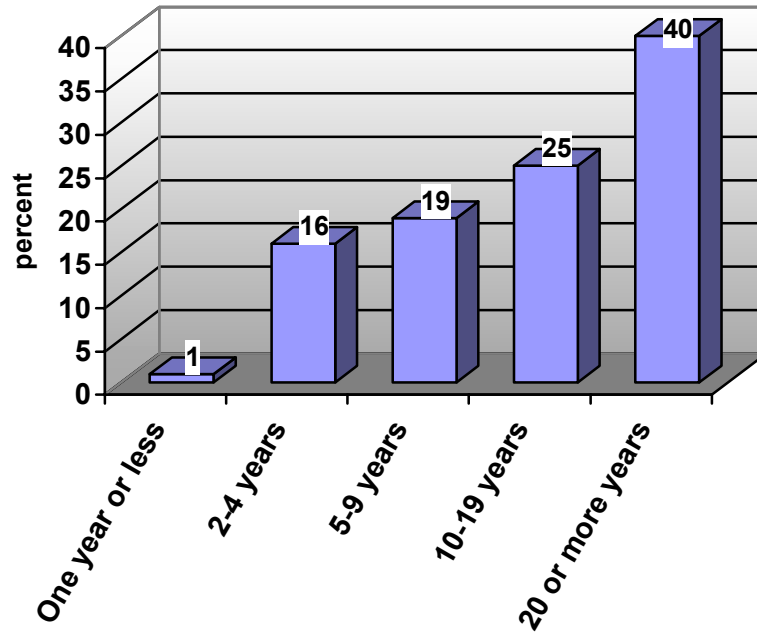
If you are married, is your spouse employed?

Yes, full time	42%
Yes, part time	12%

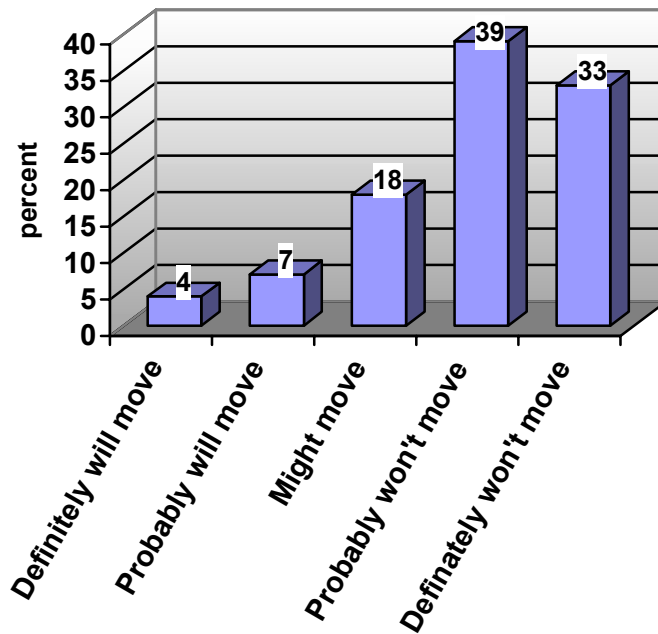
Members' Religious Heritage Growing Up

Denomination	Percent
Baptist	6
Disciples of Christ	0
Episcopal	7
Lutheran	7
Methodist	13
Presbyterian	9
United Church of Christ	29
Unitarian Universalist	2
Other Protestant	7
Roman Catholic	16
Other	2
None	2

Years members have lived in this general area?



Likelihood members might move out of the general area within the next few years?



Number of members' closest friends that attend this church?

